

# Risiweg 9 – Wohnung R09/03

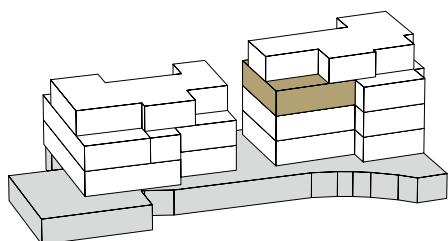
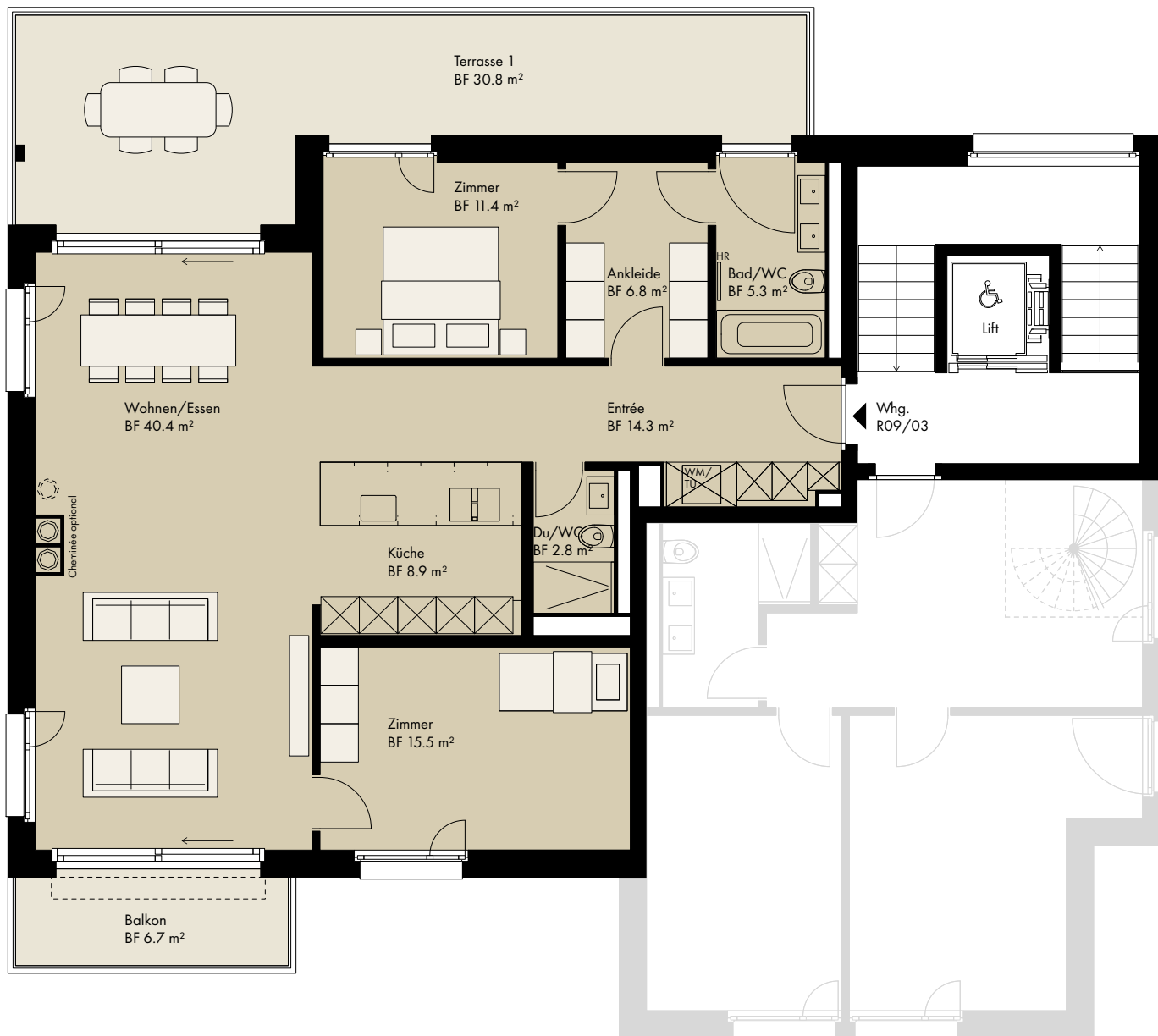
Obergeschoss

## 3.5-Zimmer-Wohnung

---

Bruttowohnfläche:	111.7 m <sup>2</sup>
Terrasse 1:	30.8 m <sup>2</sup>
Balkon:	6.7 m <sup>2</sup>

---



Risiweg 11

Risiweg 9

